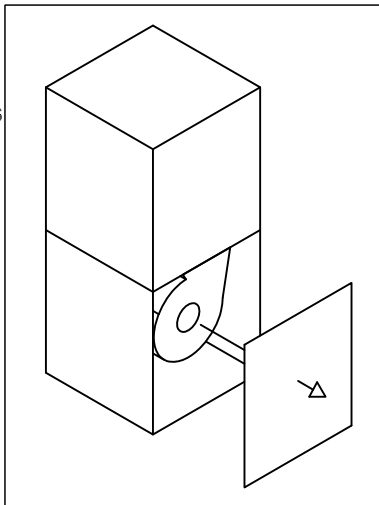
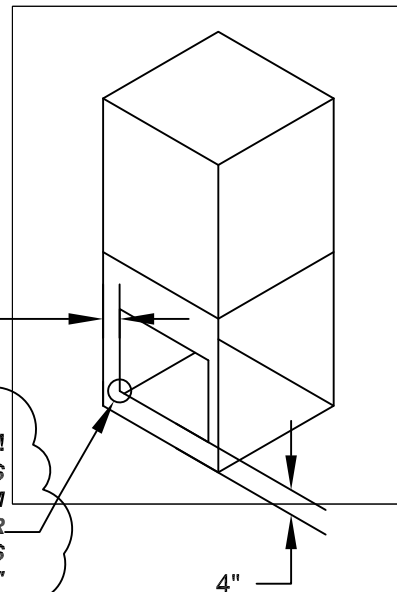


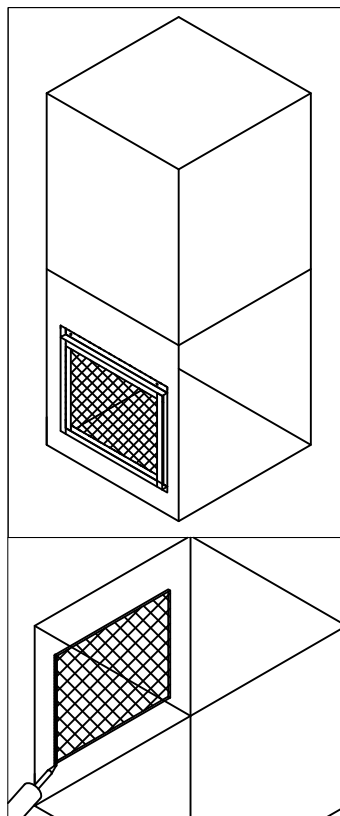
Step 1: Remove front cover and blower motor from air handler (refer to manufacturer's installation/maintenance instructions for proper removal procedure).



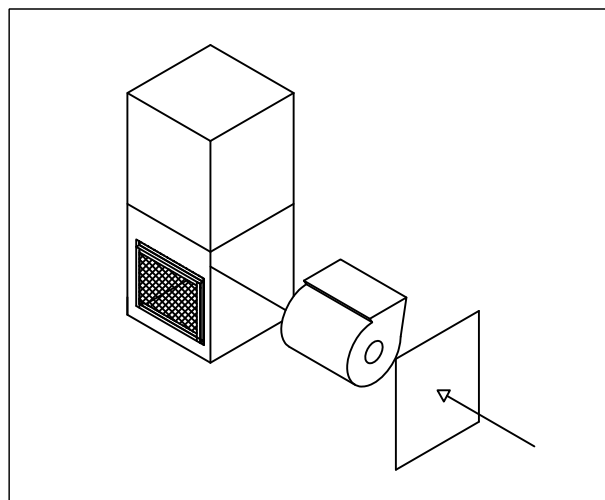
Step 2: Cut opening to accommodate filter rack (opening is 12 1/2" x 15 1/4" to fit side return kit). Space 4" from bottom and 3" from rear.



Step 3: Position the filter rack in the opening, and affix using six self-tapping sheet metal screws - two on each flange (make sure to position the filter rack so the filter can slide in and out from the front). Apply sealant around interior border after installation (as shown). Make sure to apply to ALL FOUR SIDES for complete seal.



Step 4: reinstall the blower motor and the front cover. Install your preferred 16" x 20" x 1" filter.


MTISRKIT1620
**SIDE RETURN KIT FOR TRANE/AMERICAN STANDARD
INSTALLATION INSTRUCTIONS**

NOTE: ALL DRAWINGS SUBJECT TO CHANGE WITHOUT PRIOR NOTICE.