



STANDARD CONSTRUCTION

BODY:
22 GAUGE ASTM A-653 HOT-DIPPED GALVANIZED STEEL SHEET

FEATURES

22 GAUGE GALVANIZED STEEL PROVIDES EXCELLENT CORROSION RESISTANCE AND LONGEVITY.

DESIGNED FOR USE WITH BOTH R4 AND R6 FIBERBOARD.

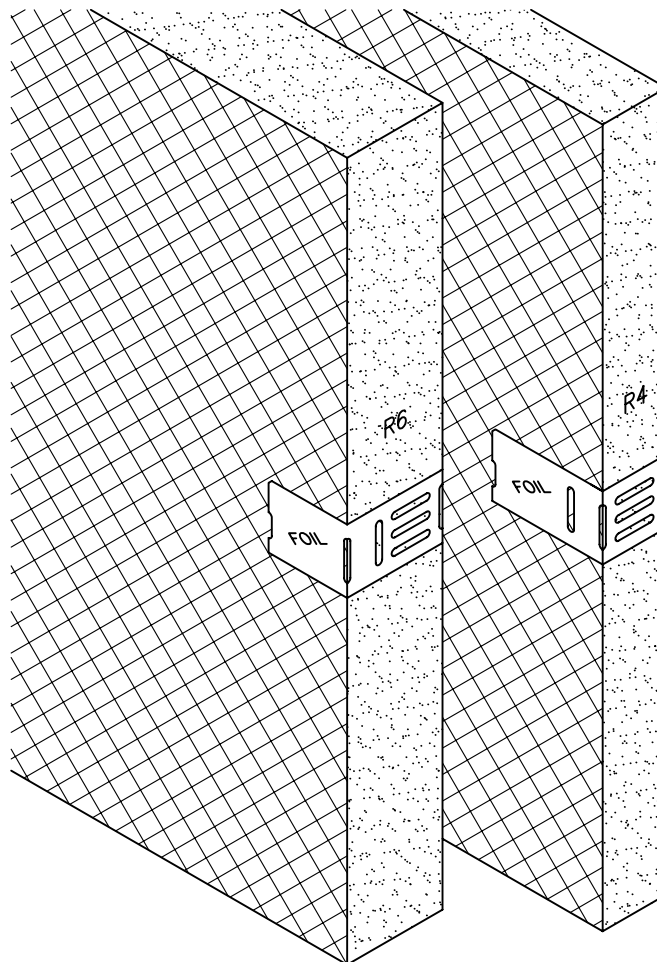
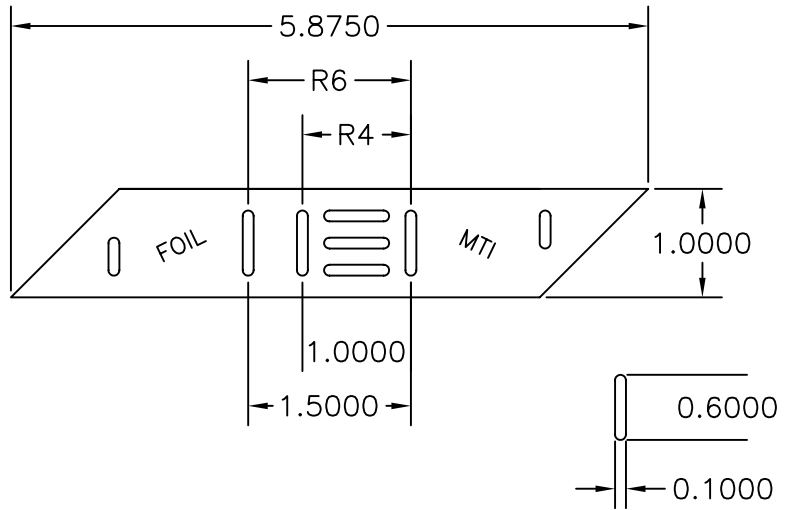
SLOTTED FACE ALLOWS FOR USE WITH VARIOUS GRILLE TYPES.

EASILY FIELD-BENT FOR QUICK INSTALLATION.

SIMPLY MATCH "FOIL" IMPRINT TO FOIL SIDE OF THE BOARD FOR PROPER ALIGNMENT.

INSTALLATION INSTRUCTIONS INCLUDED ON BOX.

100 CLIPS PER BOX.



JOB NAME:
LOCATION:
ARCHITECT:
ENGINEER:
CONTRACTOR:
CONTACT MIAMI TECH INC. FOR ADDITIONAL INFORMATION OR WITH SPECIAL REQUIREMENTS.
3611 NW 74TH ST MIAMI, FL 33147
PHONE: 305-693-7054 FAX: 305-693-6152
WEB: WWW.MIAMITECH.COM EMAIL: SALES@MIAMITECH.COM

DC-150
DUCT GRILLE CLIP
PRODUCT SPECIFICATIONS



DRAWN BY: AF	DATE: 09/18/07	SCALE: NOT TO SCALE
CHECKED BY: IG	DATE: 09/18/07	REVISION: 1

DRAWING NO. DC150