

Description:

Butterfly-style ceiling radiation dampers are installed in the air distribution portion of a fire-rated ceiling assembly; the sole purpose of which is to help maintain the fire endurance rating of the assembly. A ceiling radiation damper shuts automatically to restrict the passage of heat.



615

Required Information:

1. Please specify dimensions of the damper:
Width (inches) x Height (inches)

_____ x _____

Notes:

For Round dampers, specify diameter.

Dampers are manufactured 1/4" undersized, unless actual size is requested.

2. Please select model number:

- 615** -Square or Rectangular Ceiling Radiation Damper
- 616** -Round Ceiling Radiation Damper

3. Please specify temperature of fusible link:

- 165° F** (Standard)
- 212° F** (Optional)

4. Are factory-installed sleeves required? **Y/N**

If so, Please specify length: _____

Notes:

Available length: 8", 10", 12", 14", 16", 18", 20", 24".

Standard sleeve is 12" in length, 22gauge. As a default, fire dampers are installed centered in the sleeve. Off-center installation is available upon request.

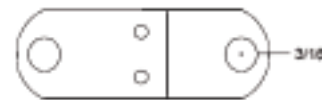
5. Are pre-cut mounting angles required? **Y/N**



616



FL-165-J14



FL-165-J316

REPLACEMENT FUSIBLE LINKS	
Part No.	Application
FL-165-J14	165°F- For use in models 616, Diameter: 4" - 7". For use in models 615, Height: 4" - 7".
FL-165-J316	165°F- For use in models 616, Diameter: 8" and larger. For use in models 615, Height: 8" and larger.

Also available in 212° F.

