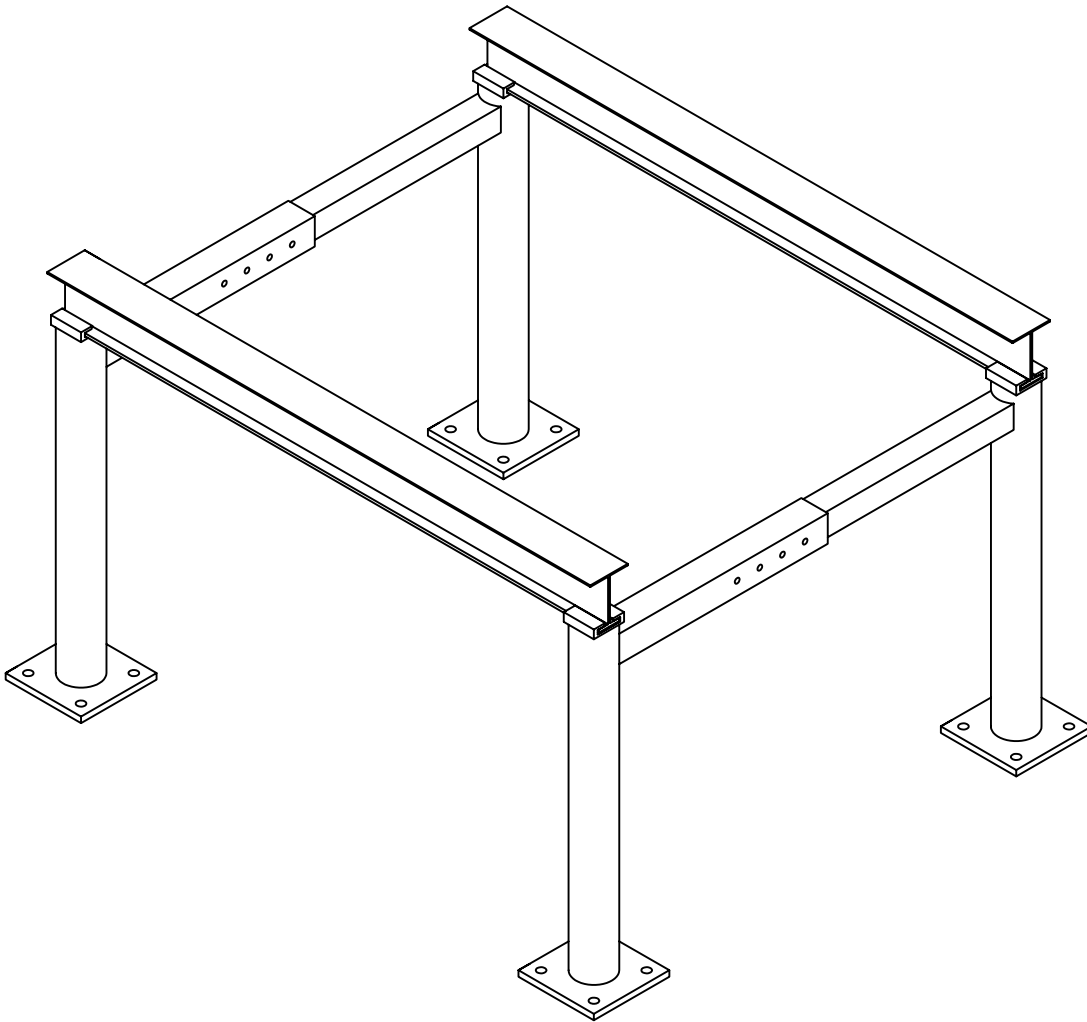


ALUMINUM A/C STANDS

TELESCOPING CROSS-MEMBER



miami tech inc.

3611 N.W. 74TH STREET

MIAMI, FL 33147

PHONE: (305) 693-7054 FAX: (305) 693-6152

ROOF STAND QUESTIONS

1. WHAT LENGTH DO YOU NEED THE STAND TO BE? (3', 6', 9', 12', 15', 18')
2. IF THE BASE PLATE IS TO BE COVERED BY MATERIAL (IE. ASPHALT, CONCRETE, INSULATION) BE SURE THERE IS ENOUGH CLEAR HEIGHT BETWEEN THE MATERIAL AND CROSS-MEMBER.

ROOF MOUNTED EQUIPMENT HEIGHT REQUIREMENTS	
UNIT WIDTH	MIN. CLEAR HEIGHT
24" OR LESS	14"
25" - 36"	18"
37" - 48"	24"
49" - 60"	30"
61" OR MORE	48"

3. HOW HIGH IS THE ROOF LINE FROM THE GROUND?
4. WHAT ARE THE DIMENSIONS AND WEIGHT OF THE UNIT?
5. WHAT IS THE AREA (SQ. IN.) OF THE LARGEST VERTICLE FACE? (UNIT WIDTH OR UNIT DEPTH MULTIPLIED BY UNIT HEIGHT)

EG: INSTALLATION REQUIRES A FIXED CROSS-MEMBER STAND.

24" WIDE X 30" DEEP X 24" TALL
150 LBS. 35' ROOF HEIGHT

LARGEST VERTICLE FACE: 30" X 24"
720 SQ. IN.

MIN. REQUIRED CLEAR HEIGHT: 14"

REFER TO TABLE 1 AND 2 TO SEE UNITS AVAILABLE.

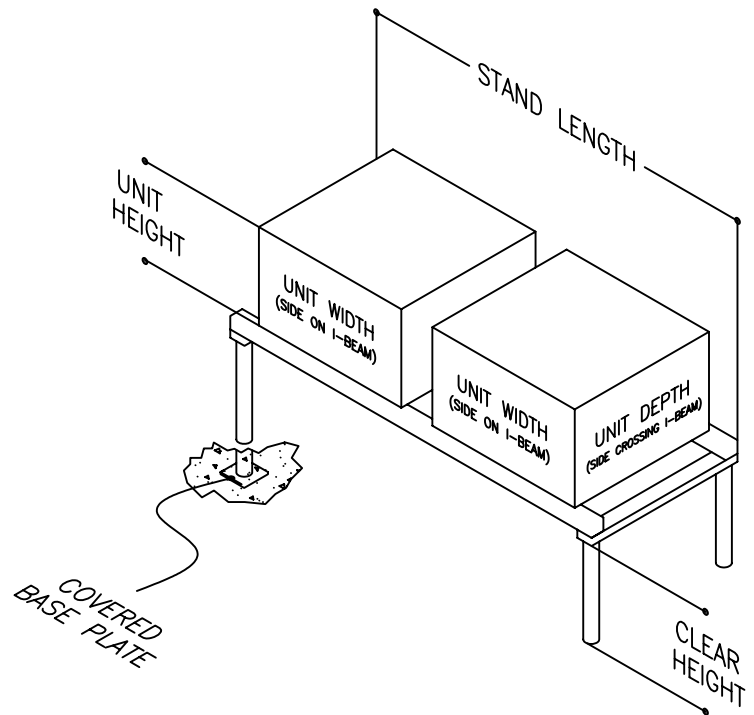
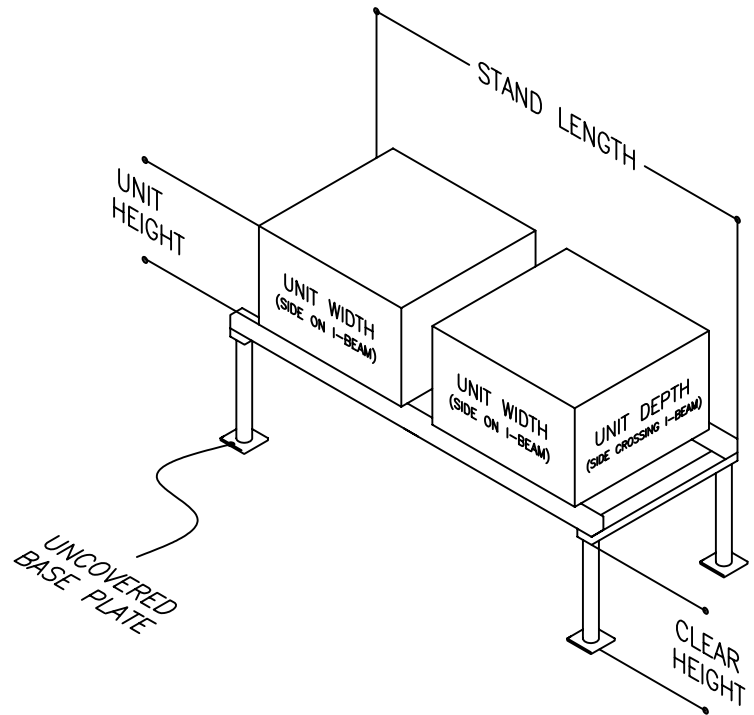
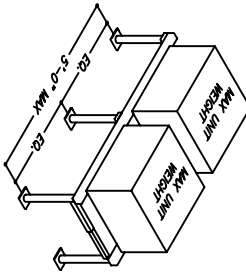
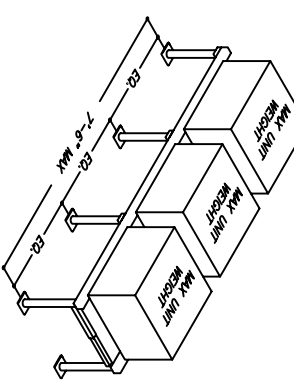
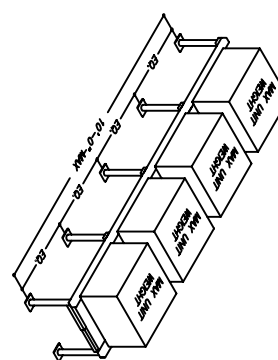
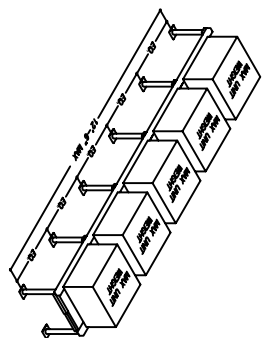


TABLE 1: TELESCOPING CROSS-MEMBER STANDS: RATINGS BY CONFIGURATION AND HEIGHT

HEIGHT ABOVE GRADE (FT)	REQUIRED WIND PRESSURE RESISTANCE (PSF)	CONFIGURATION A		CONFIGURATION B	
		LARGEST VERTICAL FACE: UP TO 900 SQ. IN. MAX UNIT WEIGHT: 200 LBS. MAX	LARGEST VERTICAL FACE: 900-1080 SQ. IN. MAX UNIT WEIGHT: 250 LBS. MAX	LARGEST VERTICAL FACE: UP TO 900 SQ. IN. MAX UNIT WEIGHT: 200 LBS. MAX	LARGEST VERTICAL FACE: 900-1080 SQ. IN. MAX UNIT WEIGHT: 250 LBS. MAX
15	35.5	AST185Q, AST240Q, AST300Q	AST185T, AST240T, AST300T	AST185Q, AST240Q, AST300Q	AST185T, AST240T, AST300T
20	37.7	AST185Q, AST240Q, AST300Q	AST185T, AST240T, AST300T	AST185Q, AST240Q, AST300Q	AST185T, AST240T, AST300T
25	39.5	AST185Q, AST240Q, AST300Q	AST185T, AST240T, AST300T	AST185Q, AST240Q, AST300Q	AST185T, AST240T, AST300T
30	41.1	AST185Q, AST240Q, AST300Q	AST185T, AST240T, AST300T	AST185Q, AST240Q, AST300Q	AST185T, AST240T
40	43.6	AST185Q, AST240Q, AST300Q	AST185T, AST240T, AST300T	AST185Q, AST240Q, AST300Q	AST185T, AST240T
50	45.7	AST185Q, AST240Q, AST300Q	AST185T, AST240T, AST300T	AST185Q, AST240Q, AST300Q	AST185T
60	47.5	AST185Q, AST240Q, AST300Q	AST185T, AST240T, AST300T	AST185Q, AST240Q, AST300Q	AST185T
70	49.1	AST185Q, AST240Q, AST300Q	AST185T, AST240T, AST300T	AST185Q, AST240Q, AST300Q	AST185T
80	50.5	AST185Q, AST240Q, AST300Q	AST185T, AST240T, AST300T	AST185Q, AST240Q, AST300Q	
90	51.8	AST185Q, AST240Q, AST300Q	AST185T, AST240T, AST300T	AST185Q, AST240Q, AST300Q	
100	52.9	AST185Q, AST240Q, AST300Q	AST185T, AST240T, AST300T	AST185Q, AST240Q	
125	55.5	AST185Q, AST240Q, AST300Q	AST185T, AST240T, AST300T	AST185Q, AST240Q	
150	57.6	AST185Q, AST240Q, AST300Q	AST185T, AST240T, AST300T	AST185Q, AST240Q	
ROOF MOUNTED EQUIPMENT HEIGHT REQUIREMENTS		CONFIGURATION A		CONFIGURATION B	
WIDTH OF EQUIPMENT	MINIMUM CLEAR HEIGHT				
24" OR LESS	14"				
25" - 36"	18"				
37" - 48"	24"				
49" - 60"	30"				
61" OR MORE	48"				

TABLE 2: TELESCOPING CROSS-MEMBER STANDS: RATINGS BY CONFIGURATION AND HEIGHT

HEIGHT ABOVE GRADE (FT)	REQUIRED WIND PRESSURE RESISTANCE (PSF)	CONFIGURATION C		CONFIGURATION D		CONFIGURATION E		CONFIGURATION F	
		LARGEST VERTICAL FACE: UP TO 900 SQ. IN. MAX UNIT WEIGHT: 200 LBS. MAX	LARGEST VERTICAL FACE: 900-1080 SQ. IN. MAX UNIT WEIGHT: 250 LBS. MAX	LARGEST VERTICAL FACE: UP TO 900 SQ. IN. MAX UNIT WEIGHT: 200 LBS. MAX	LARGEST VERTICAL FACE: 900-1080 SQ. IN. MAX UNIT WEIGHT: 250 LBS. MAX	LARGEST VERTICAL FACE: UP TO 900 SQ. IN. MAX UNIT WEIGHT: 200 LBS. MAX	LARGEST VERTICAL FACE: 900-1080 SQ. IN. MAX UNIT WEIGHT: 250 LBS. MAX	LARGEST VERTICAL FACE: UP TO 900 SQ. IN. MAX UNIT WEIGHT: 200 LBS. MAX	LARGEST VERTICAL FACE: 900-1080 SQ. IN. MAX UNIT WEIGHT: 250 LBS. MAX
15	35.5	AST1850, AST2400, AST3000	AST185T, AST240T, AST300T	AST1850, AST2400, AST3000	AST185T, AST240T, AST300T	AST1850, AST2400, AST3000	AST185T, AST240T, AST300T	AST1850, AST2400, AST3000	AST185T, AST240T, AST300T
20	37.7	AST1850, AST2400, AST3000	AST185T, AST240T, AST300T	AST1850, AST2400, AST3000	AST185T, AST240T, AST300T	AST1850, AST2400, AST3000	AST185T, AST240T, AST300T	AST1850, AST2400, AST3000	AST185T, AST240T, AST300T
25	39.5	AST1850, AST2400, AST3000	AST185T, AST240T, AST300T	AST1850, AST2400, AST3000	AST185T, AST240T, AST300T	AST1850, AST2400, AST3000	AST185T, AST240T, AST300T	AST1850, AST2400, AST3000	AST185T, AST240T, AST300T
30	41.1	AST1850, AST2400, AST3000	AST185T, AST240T, AST300T	AST1850, AST2400, AST3000	AST185T, AST240T, AST300T	AST1850, AST2400, AST3000	AST185T, AST240T, AST300T	AST1850, AST2400, AST3000	AST185T, AST240T, AST300T
40	43.6	AST1850, AST2400, AST3000	AST185T, AST240T, AST300T	AST1850, AST2400, AST3000	AST185T, AST240T, AST300T	AST1850, AST2400, AST3000	AST185T, AST240T, AST300T	AST1850, AST2400, AST3000	AST185T, AST240T, AST300T
50	45.7	AST1850, AST2400, AST3000	AST185T, AST240T, AST300T	AST1850, AST2400, AST3000	AST185T, AST240T, AST300T	AST1850, AST2400, AST3000	AST185T, AST240T, AST300T	AST1850, AST2400, AST3000	AST185T, AST240T, AST300T
60	47.5	AST1850, AST2400, AST3000	AST185T, AST240T, AST300T	AST1850, AST2400, AST3000	AST185T, AST240T, AST300T	AST1850, AST2400, AST3000	AST185T, AST240T, AST300T	AST1850, AST2400, AST3000	AST185T, AST240T, AST300T
70	49.1	AST1850, AST2400, AST3000	AST185T, AST240T, AST300T	AST1850, AST2400, AST3000	AST185T, AST240T, AST300T	AST1850, AST2400, AST3000	AST185T, AST240T, AST300T	AST1850, AST2400, AST3000	AST185T, AST240T, AST300T
80	50.5	AST1850, AST2400, AST3000	AST185T, AST240T, AST300T	AST1850, AST2400, AST3000	AST185T, AST240T, AST300T	AST1850, AST2400, AST3000	AST185T, AST240T, AST300T	AST1850, AST2400, AST3000	AST185T, AST240T, AST300T
90	51.8	AST1850, AST2400, AST3000	AST185T, AST240T, AST300T	AST1850, AST2400, AST3000	AST185T, AST240T, AST300T	AST1850, AST2400, AST3000	AST185T, AST240T, AST300T	AST1850, AST2400, AST3000	AST185T, AST240T, AST300T
100	52.9	AST1850, AST2400, AST3000	AST185T, AST240T, AST300T	AST1850, AST2400, AST3000	AST185T, AST240T, AST300T	AST1850, AST2400, AST3000	AST185T, AST240T, AST300T	AST1850, AST2400, AST3000	AST185T, AST240T, AST300T
125	55.5	AST1850, AST2400, AST3000	AST185T, AST240T, AST300T	AST1850, AST2400, AST3000	AST185T, AST240T, AST300T	AST1850, AST2400, AST3000	AST185T, AST240T, AST300T	AST1850, AST2400, AST3000	AST185T, AST240T, AST300T
150	57.6	AST1850, AST2400, AST3000	AST185T, AST240T, AST300T	AST1850, AST2400, AST3000	AST185T, AST240T, AST300T	AST1850, AST2400, AST3000	AST185T, AST240T, AST300T	AST1850, AST2400, AST3000	AST185T, AST240T, AST300T
ROOF MOUNTED EQUIPMENT HEIGHT REQUIREMENTS		CONFIGURATION C 		CONFIGURATION D 		CONFIGURATION E 		CONFIGURATION F 	
WIDTH OF EQUIPMENT		MINIMUM CLEAR HEIGHT							
24" OR LESS		14"							
25" - 36"		18"							
37" - 48"		24"							
49" - 60"		30"							
61" OR MORE		48"							