



STANDARD CONSTRUCTION

MATERIALS DESCRIPTION

6061-T6 EXTRUDED ALUMINIUM
"F" TRACK : CUSTOM "F" TRACK RAIL
CROSS MEMBER FEMALE : 1"X1" SQUARE TUBE
CROSS MEMBER MALE : 3/4"X3/4" SQUARE TUBE
ANGLE SUPPORTS: 1/2"X1/2" ANGLE
LEGS: 1"X1" SQUARE TUBE
CAPS: 1" PLASTIC (POLYPROPYLENE)
THUMB SCREWS TO SET SPACING

OPTIONS:

CUSTOM SIZES AVAILABLE

STANDARD SIZES:

SIZE	HEIGHT (H)	DEPTH (D)	WIDTH (W)
AHEB1720W	17.5"	20"	16"-26"
AHEB1722W	17.5"	22"	16"-26"
AHEB1727W	17.5"	27"	16"-26"
AHEB2022W	20"	22"	16"-26"
AHEB2422W	24"	22"	16"-26"

FEATURES:

ALUMINIUM PROVIDES EXCELLENT CORROSION RESISTANCE.

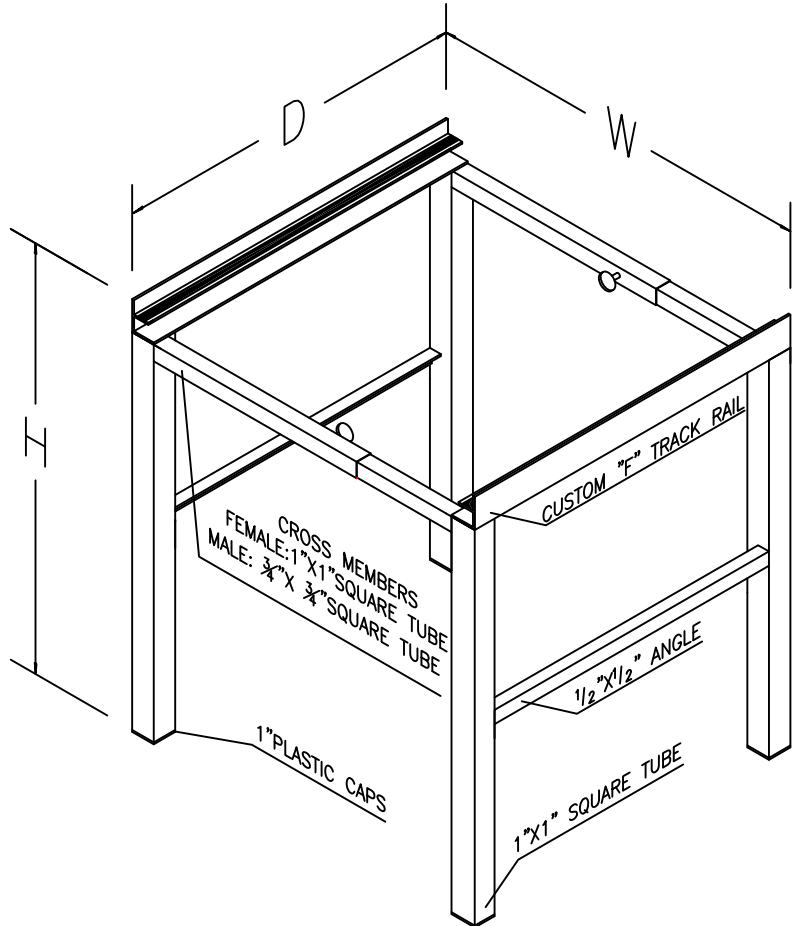
1/8" X 3/8" RUBBER STRIPS INCLUDED TO MINIMIZE VIBRATION.

1" PLASTIC CAPS ON LOWER LEG OPENINGS.

UNIVERSAL DEPTH TO FIT MOST AIR HANDLER UNITS.

WIDTH ADJUSTABLE FROM 16" - 26"

AVAILABLE IN PALLET QUANTITY OF 25



JOB NAME:
LOCATION:
ARCHITECT:
ENGINEER:
CONTRACTOR:
CONTACT MIAMI TECH INC. FOR ADDITIONAL INFORMATION OR WITH SPECIAL REQUIREMENTS.
3611 NW 74TH ST MIAMI, FL 33147 PHONE: 305-693-7054 FAX: 305-693-6152
WEB: WWW.MIAMITECH.COM EMAIL: SALES@MIAMITECH.COM

AHEB

ALUMINIUM AIR HANDLER STAND
PRODUCT SPECIFICATIONS

NOTE: ALL DRAWINGS SUBJECT TO CHANGE WITHOUT PRIOR NOTICE.



DRAWN BY: AF	DATE: 01/07/2009	SCALE: NOT TO SCALE	DRAWING NO.
CHECKED BY: IV	DATE: 8/20/2012	REVISION: 2	AHEB